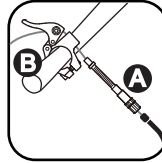


## INSTALLATION

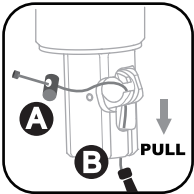


- 1.** Mount remote control unit to handlebar, and tighten the bolt (suggested torque 4-5Nm).

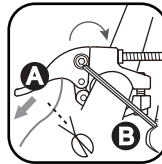
4-5Nm.



- 3.** Thread cable through flexible lead pipe "A" into remote lever "B".



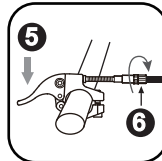
- 2.** Thread cable "A" through barrel nut, switch trigger unit, and cable housing "B".



- 4.** Pull cable "A" and check if cable and housing are a tight fit. Cut off excess cable.

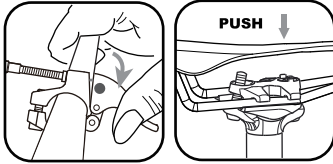


- ⚠** Make sure the barrel nut is fitted properly into the trigger, and the cable housing fits tightly onto the trigger unit.



- 5.** Push remote lever to see if the assembly functions properly.
- 6.** Adjust cable tension by turning the barrel adjuster.

## OPERATION



**1.** Press remote control lever, at the same time push down or sit onto saddle.

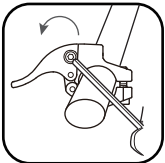


**2.** Release the remote control lever once the saddle reaches your desired height.

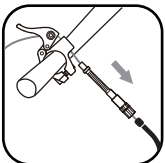


**3.** Remove weight from saddle, press remote control lever until the saddle returns to your desired height.

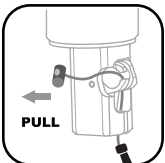
## CABLE REPLACEMENT



**1.** Loosen set screw on remote control lever.

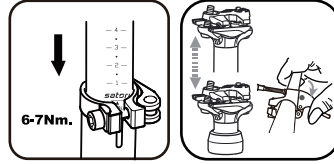


**2.** Remove cable and housing from switch trigger unit.



**3.** Remove cable from remote control unit. Resume installation steps 2-5.

## CAUTION

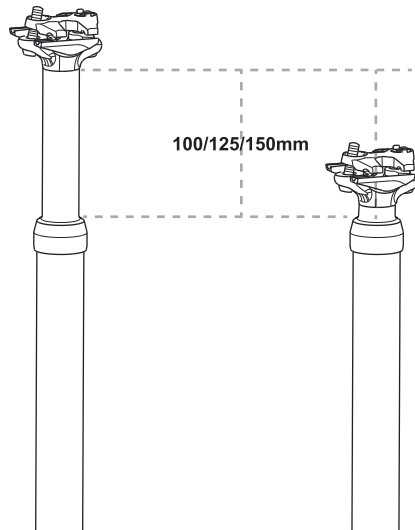


**1.** Dropper post must be inserted into seat tube with a minimum of 100/120mm insertion, please refer to the minimum insert line on the seatpost.

**2.** To ensure smooth operation, please do not exceed 6~7Nm torque when tightening seat clamp.

**3.** Always double check if the post is installed to the bike properly, and check if the post is working well before every ride.

## HEIGHT RANGE



Pending System GmbH & Co.KG  
Ludwig-Hüttner-Str. 5-7  
D-95679 Waldershof